

## Benefits of *ClimateLite*

### Stay ahead of competitors

The vital move to a lower carbon society means that construction industry companies will have to adopt low carbon design strategies to remain competitive. But while this is a complex issue demanding a structured approach from the outset of any project, there is currently no early stage tool to help produce a comprehensive low carbon design.

*ClimateLite* will guide building designers through a systematic approach that quickly and cost effectively addresses challenging current and future carbon emission targets and the use of renewable energy technologies.

### Shape and trial *ClimateLite*

This three-year, Government funded project aims to have an initial version of the tool by June 2009, to be trialled on real *ClimateLite* Sponsor and Technical Partner developments. The Partners will help shape the design tool to ensure that it provides what designers need and that it operates effectively in a commercial environment. As members, you will be able to work with design experts to trial the tool on your own construction projects.

## Interested in *ClimateLite*?

The *ClimateLite* development team would like to invite commercial organisations to become involved in the project.

There are two ways to work with the *ClimateLite* team:

### PROJECT SPONSOR

We are looking to attract commercial sponsors drawn from leading property investors, developers, designers and clients. As a sponsor you will be required to pay a one off investment fee.

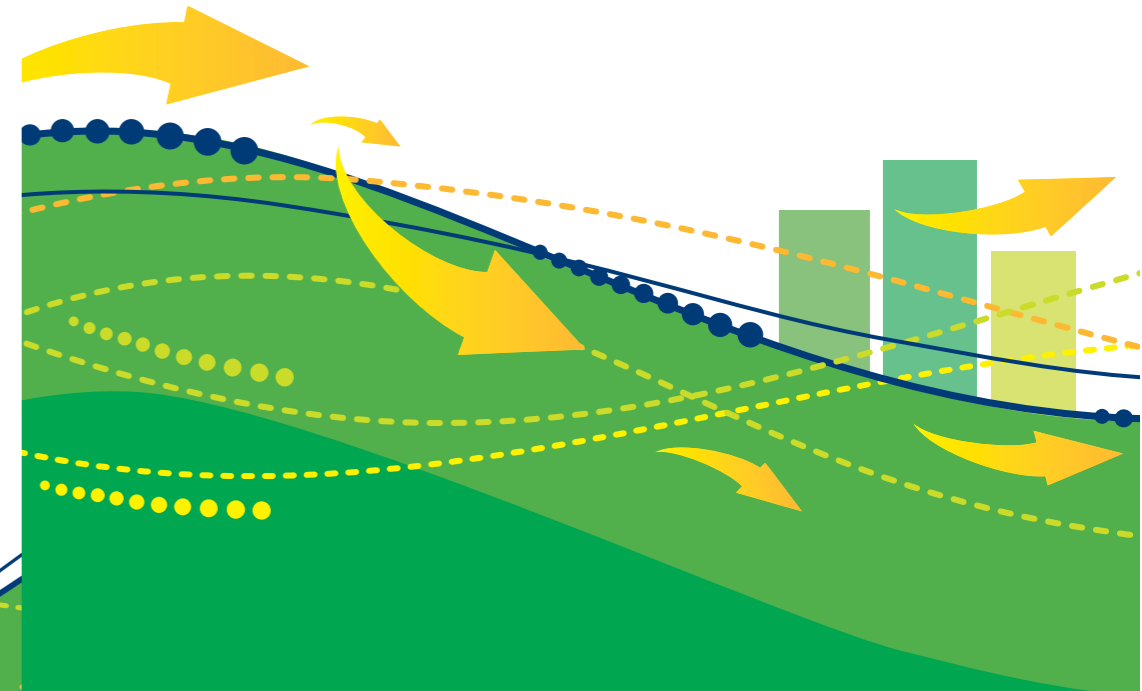
Please contact us about how our sponsorship package could help raise your company profile through participation in this groundbreaking project.

### TECHNICAL PARTNER

We are also looking for suitable developments to trial out early versions of the *ClimateLite* software. Please let us know if you would like our expert project partners to work with you to enhance the environmental performance of your development with *ClimateLite*. You may simply wish to be kept informed of project progress and trial the software yourself.

To register your interest, please contact:

Chris Scott  
BRE, Bucknalls Lane,  
Garston, Herts WD25 9XX  
T +44 (0)1923 664511  
E [scottce@bre.co.uk](mailto:scottce@bre.co.uk)  
W [www.climatelite.co.uk](http://www.climatelite.co.uk)



Printed on an FSC certified paper. 80% Recycled fibre / 20% Virgin-TCF fibre.  
Wood pulp sourced from sustainable forests.

Be at the forefront of low carbon building design

## About *ClimateLite*

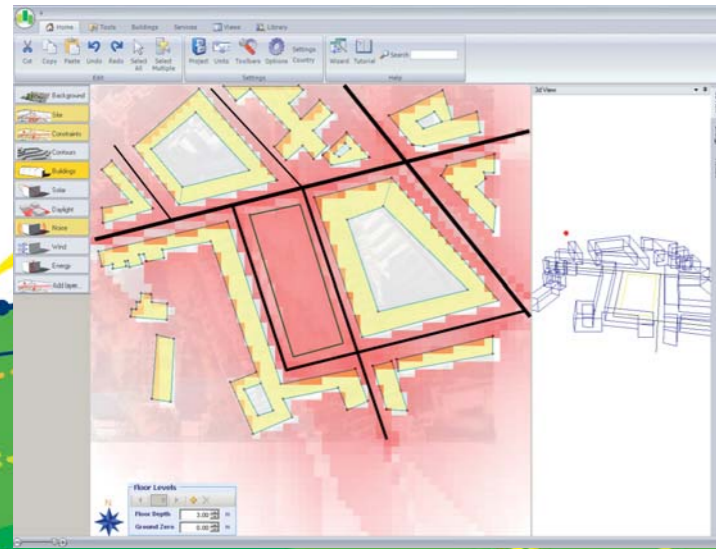
*ClimateLite* will steer design teams towards truly integrated low carbon design from initial design conception.

The consortium developing *ClimateLite* is made up of the following low carbon building experts: BRE, Cardiff University, Cambridge Architectural Research, Southfacing Services Ltd and Bobby Gilbert & Associates. The Project is supported by RIBA.

## What *ClimateLite* will do

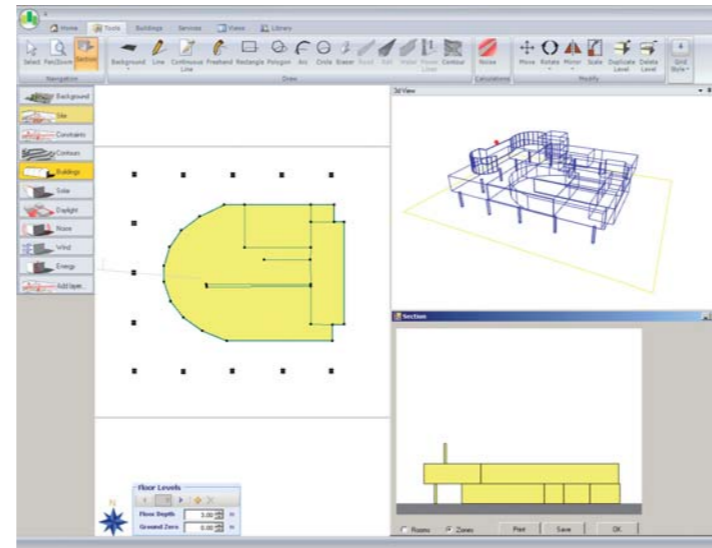
### Site Analysis

*ClimateLite* is a simple-to-use tool that will help building designers to make choices in terms of location, orientation, massing and shape in the early design stage. It will also assist in communicating this process visually to clients and local authorities. The tool will consider the impact of daylight and sunlight patterns on the site, and of wind flow patterns that affect natural ventilation. And it will highlight areas where there are acoustic challenges. Ultimately it will enable an investigation into appropriate building form with respect to the surrounding conditions.



### Low Energy Design

*ClimateLite* will aid the evaluation of the energy and environmental performance of different building design options. It also considers internal environmental conditions balancing issues such as daylighting and thermal comfort. It will help with passive design decisions in relation to glazing ratios, shading strategies, insulation levels and the use of thermal mass. The software also includes a search library that will allow the user to consult literature covering best practice in low energy design.



### Carbon Mixer

*ClimateLite* will help in developing a scheme's early-stage energy strategy by considering the most appropriate mix of low-carbon energy technologies. A database of renewable technologies, along with their associated generation outputs and costs, is included. The software generates and graphically illustrates predicted heating, cooling and power demands along with the associated carbon footprint of the scheme.

### Strategy Wizard

A key feature of *ClimateLite* is the Strategy Wizard that guides the user through the different stages of the software.

