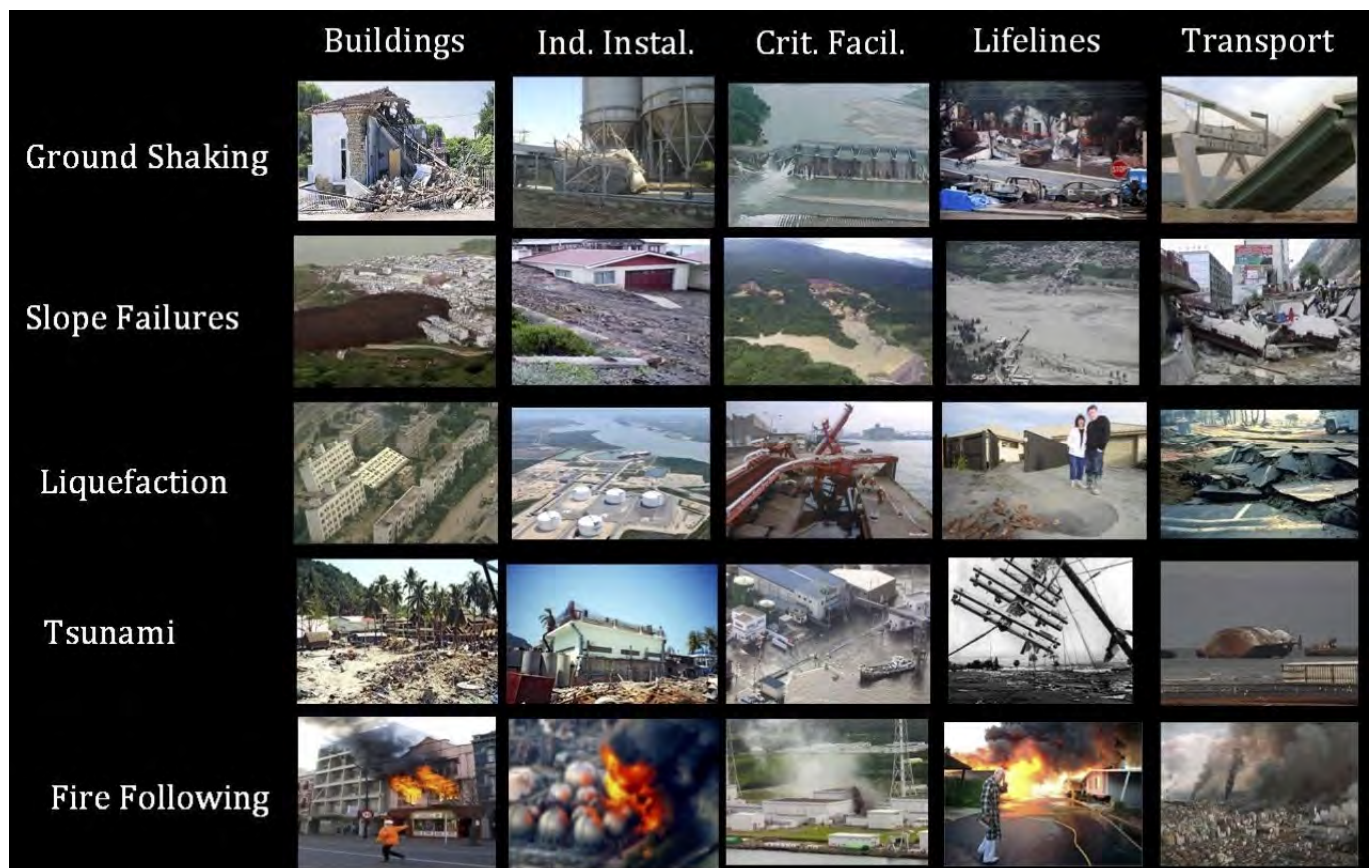


What have we learned from chasing earthquakes?



Some of the types of earthquake consequences considered in the GEM Earthquake Consequences Database

Robin Spence and Stephen Platt CAR Directors

CAR and the Martin Centre have been actively involved in post-earthquake reconnaissance missions since the early 1980's. Robin Spence will consider what, if any, have been the benefits of this activity for the design professions, for loss estimation, and for improving the seismic safety of the countries affected, and ask whether field missions can hope to achieve more. Steve Platt will present an analysis of causal factors affecting the speed and quality of recovery after ten recent earthquake disasters.

Wednesday, 15 February, 2017
CAR Offices, 25 Gwydir Street
Drinks from 5.30 p.m. Talk at 6.00 p.m.

Please let Anna know by Tuesday 14 February if you will be attending (anna.petrosyan@carltd.com).